



608 W 11TH STREET

11TH STREET @ ASHLAND STREET

HOUSTON HEIGHTS



SCAN W CAMERA

FOR LEASE leasing@reviveco.com 713.357.5800



LOCATION

608 W. 11TH STREET 77008

PROPERTY HIGHLIGHTS

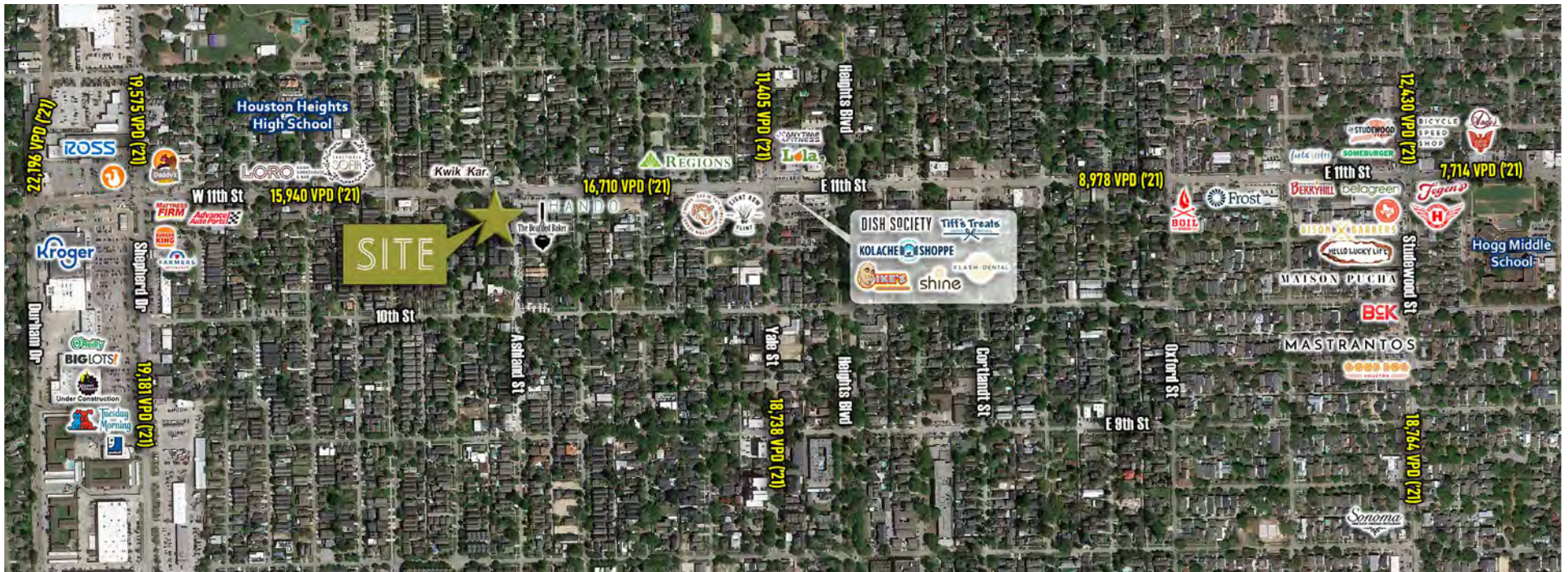
- 2,200 SF Renovated Warehouse with Patio
- Frontage on Busy East/West 11th Street Corridor
- Surrounded by Highest Sales Volumes in Area
- Option to operate in existing 1,400 SF house
- Located between busy Shepherd and Heights Blvd
- Off-street parking throughout Heights

MARKET DEMOGRAPHICS

	1 mi	3 mi	5 mi
2022 POPULATION	21K	166K	440K
DAYTIME POPULATION	20K	206K	685K
AVERAGE HH INCOME	\$176K	\$155K	\$137K
MEDIAN AGE	40.2	37.4	36.9
AVG HOME VALUES	\$575K	\$496K	\$516K
ANN. HH RESTAURANT SPENDING	\$17.8K	\$14.5K	\$40.5K

RESTAURANT SATURATION

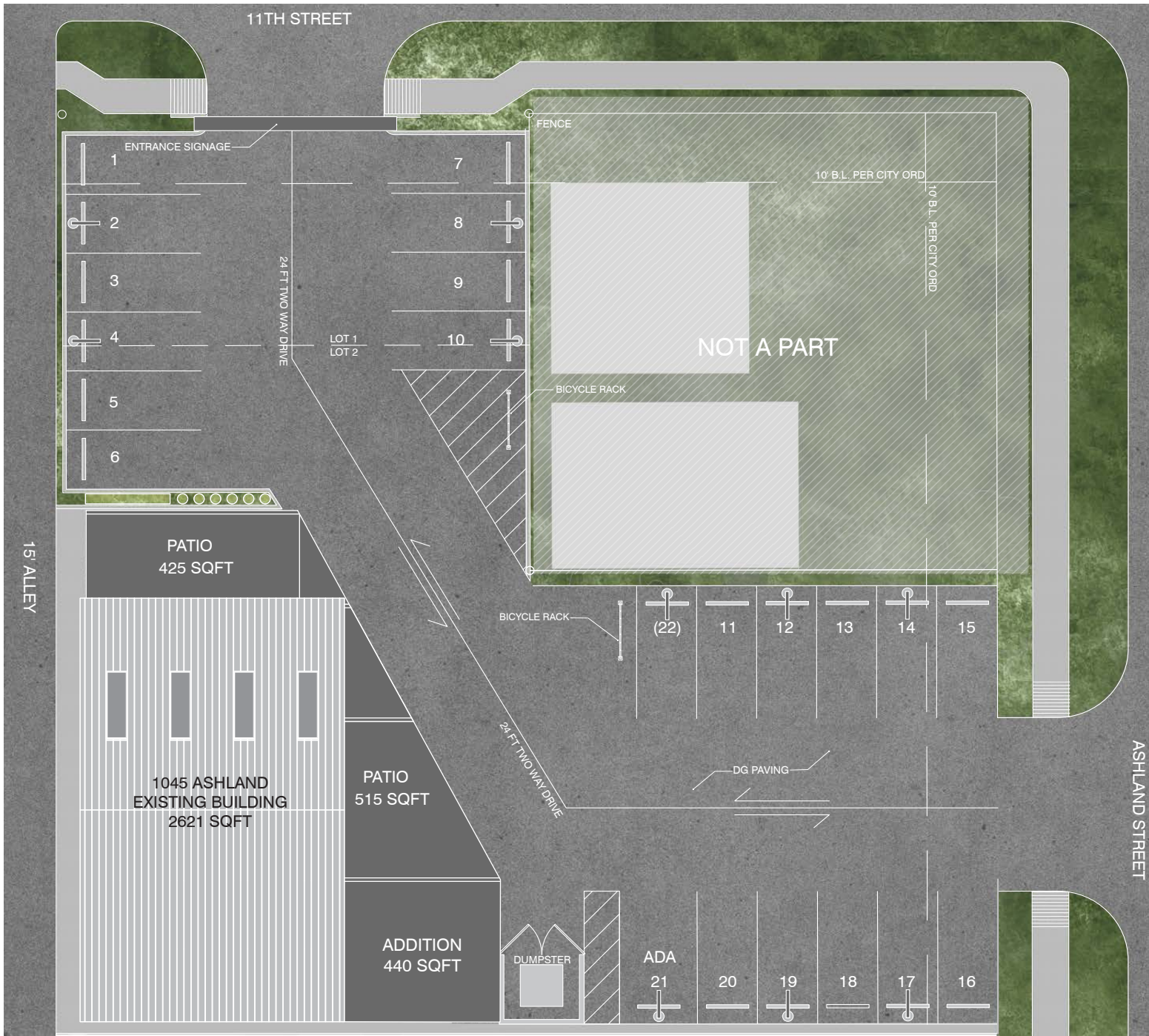
HOUSTON HEIGHTS	4.0
GARDEN OAKS / OAK FOREST	2.35
SPRING BRANCH	2.1
WEST U / RICE VILLAGE	4.87
UPPER KIRBY / RIVER OAKS	7.14
MONTROSE	7.54



MARKET AREA



SITE PLAN



CURATION

